



# WESROC.net

Your business' personal web portal into your monitoring data and hardware.

**WESROC**<sup>®</sup>

MONITORING SOLUTIONS



# WESROC.net

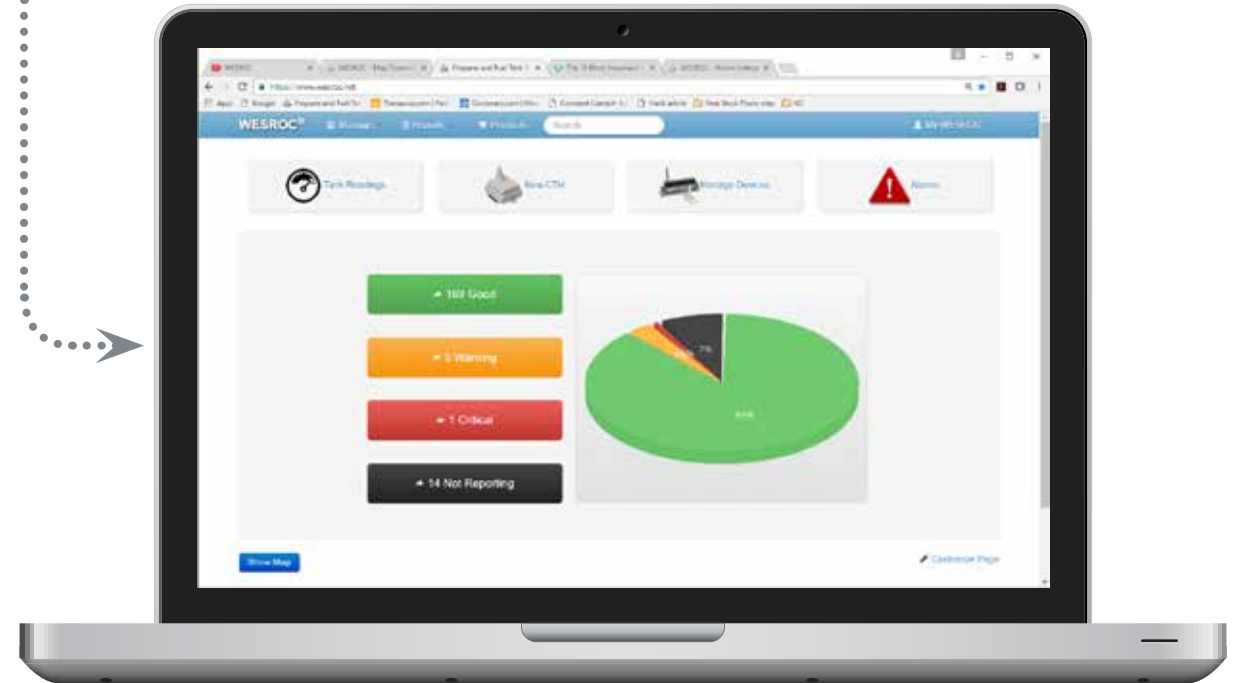
Your business' personal web portal into your monitoring data and hardware.

The easy-to-use, WESROC.net is your tool for viewing your monitoring data and managing your monitoring hardware. Your web portal provides access to insight and intelligence that enables you to make smarter and efficient decisions.

- View monitor readings and historical data
- Manage all monitoring devices
- View all monitored locations in the map view as interactive push pins colored by status
- Set up and edit new and existing monitoring equipment quickly and easily
- Configure and edit alarms and tank thresholds

## Welcome Screen

The Welcome Screen gives you an overall view of all of your monitored tanks and assets. The pie chart is your visual for determining the status of each of your monitors. By selecting the color coded bars to the left of the graph, you are able to view that category in a list view.



### Quick Access to Frequently Used Items



Displays general overall status of the monitors that are set up in WESROC.net



Quickly and easily set up new cellular tank monitors.



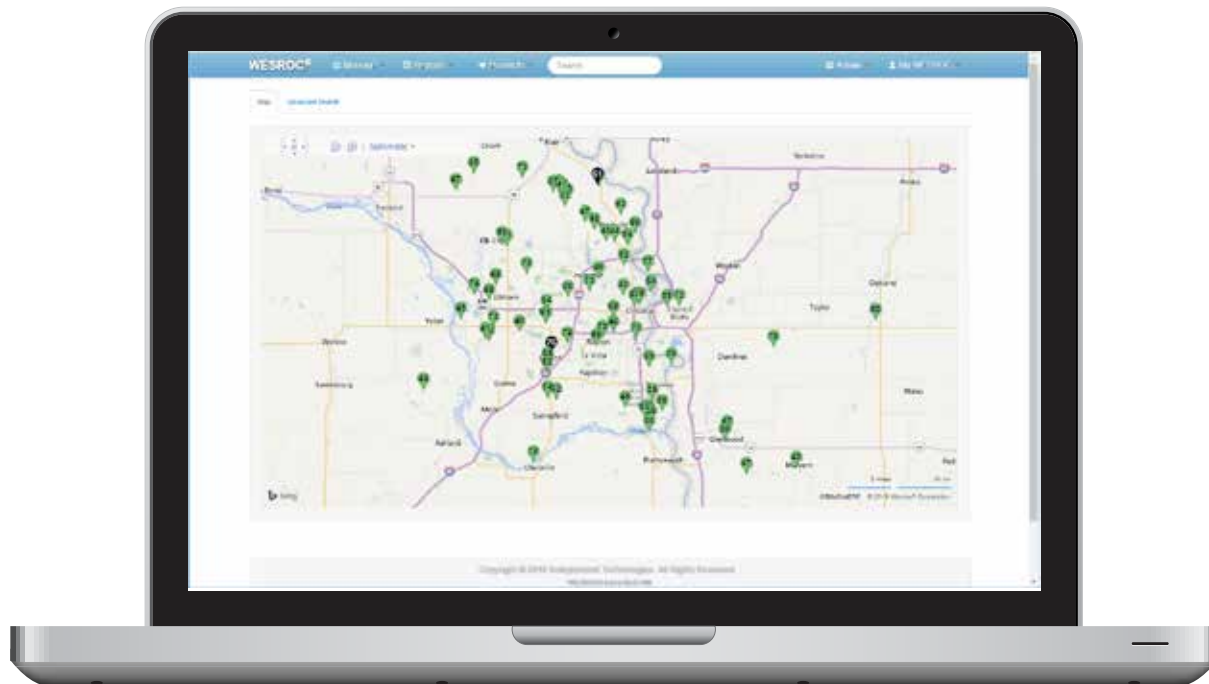
Manage the settings of the equipment set up in your web portal.





View and sort customized alerts and warnings.

# Interactive Mapping Tool

View each of your monitored locations from the map view. Pin icons show each of your monitored locations. You have the ability to zoom in and out, change from road to bird's eye mode, and explore surrounding areas. Click on the pin or flag to view and edit details about the location and monitoring hardware.

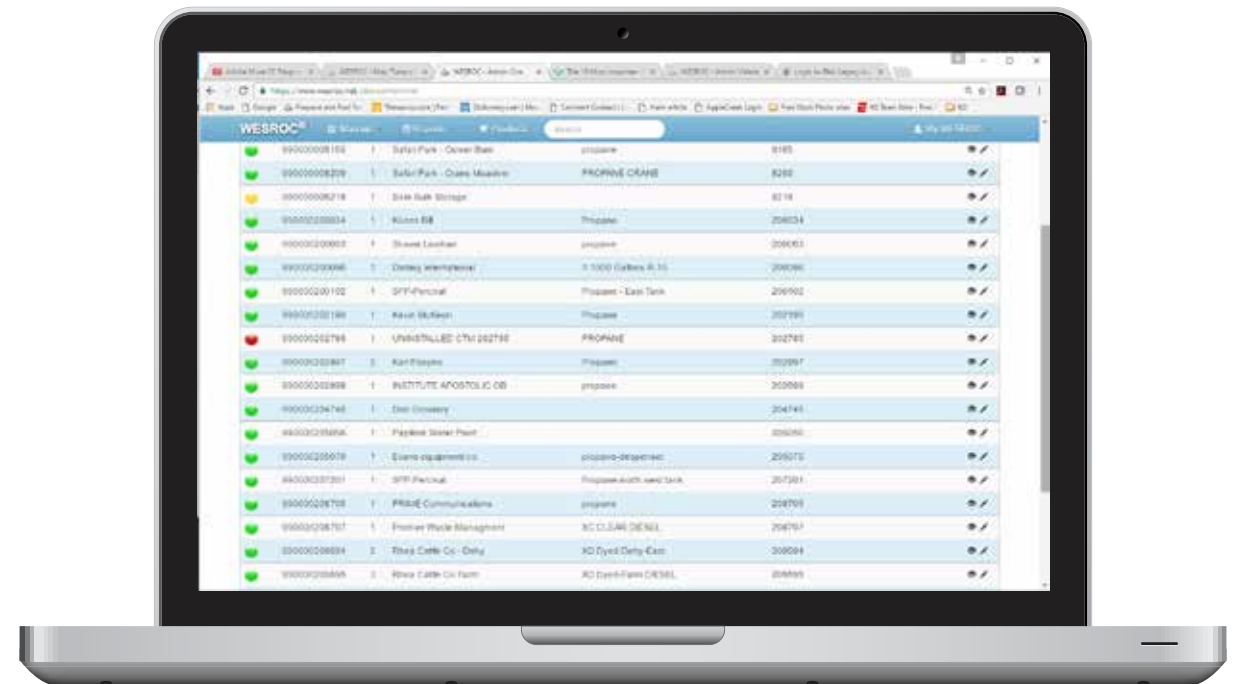



 Each of your monitoring devices is labeled on the map with a green, red, yellow or black pin. The colors indicate status, the same as the welcome screen colors.


 The flag labels indicate GPS enabled devices. GPS allows for the tracking of mobile tanks such as mobile anhydrous ammonia or water tanks.


# Manage Monitoring Devices


Managing and editing your monitoring devices is very easy with your web portal. Set up and edit your monitoring device's location, tank capacity and fuel type. Add additional information such as branch, routes, drivers, account info and GPS coordinates.



 **Good**  
The tank or asset is within your predetermined threshold settings.

 **Warning**  
The tank or asset is nearing critical, but still within your preferred thresholds.

 **Critical**  
The tank or asset has exceeded your predetermined threshold settings.

 **Not Reporting**  
The device at this location is not reporting data and needs attention.

# Smart Search

Always located at the top of the screen for easy access, the search feature is incredibly smart. You can enter all or any part of an address, name, serial number, or account information and your web portal will list every device that matches the search criteria.



# Reports. Simple, but powerful.

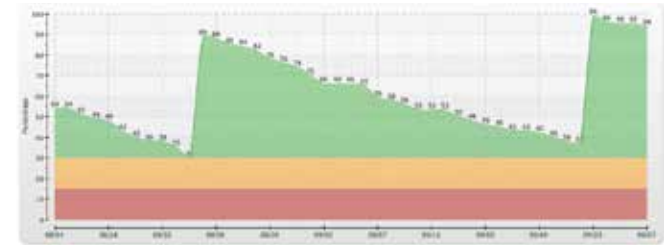
With our custom sorting and filtering options, you can gain valuable insight into your business. WESROC's reporting options enable you to be more efficient and profitable by making informed decisions.

- Standard default reports already built-in
- Sort, filter and create new reports using any field
- Save reports and templates for easy future access

- Create charts and graphs
- Track, view and chart historical data
- Create custom fields
- Export XLS and CSV files for integration with existing back-office software
- Advanced search options
- Save report criteria as a template for later use

## Tank Level Data Chart

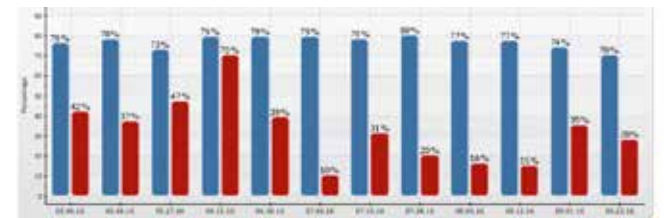
Example of a 12,000 gallon diesel tank from August to September.



## Fill Report Chart

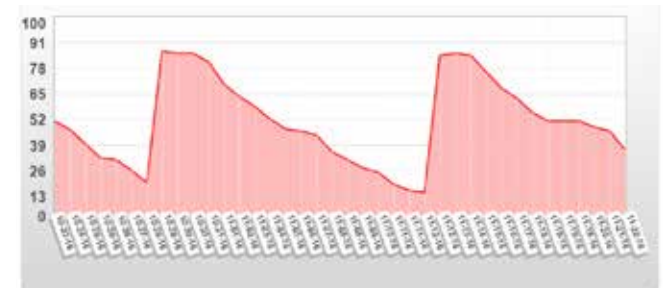
You have the ability to view both the End of Fill Level along with the % of Capacity.

This allows you to grade your delivery and drop efficiency.



## Tank Transmitter Log

View and export usage history for your customers. A great tool to demonstrate your reliability to your customers as well as resolve billing disputes.





ALL WESROC PRODUCTS ARE PROUDLY  
DESIGNED, ENGINEERED & MANUFACTURED  
IN THE UNITED STATES OF AMERICA

**VETERAN**



OWNED & OPERATED



# WESROC<sup>®</sup>

MONITORING SOLUTIONS

[www.WESROCSOLUTIONS.com](http://www.WESROCSOLUTIONS.com)

866.493.7762

1960 Ridgeview Road | Blair, Nebraska 68008